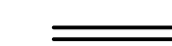








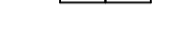

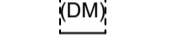
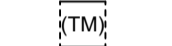
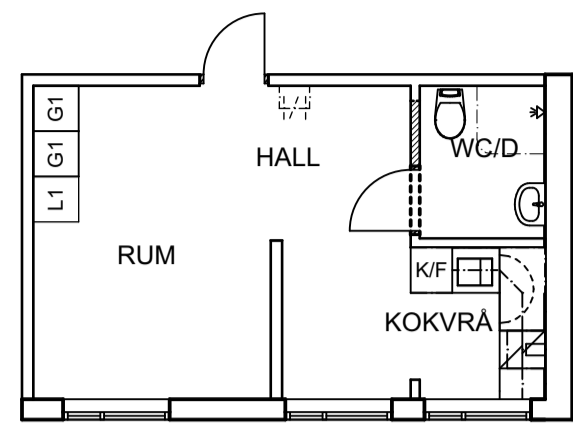


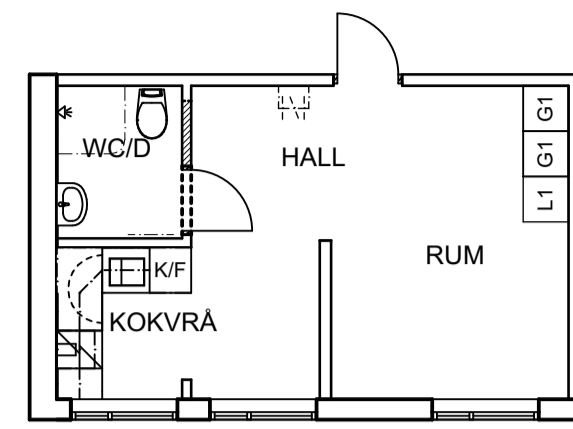
FÖRKLARINGAR
BETECKNINGAR

-  = BEFINTLIG VÄGG (Current wall)
-  = NY VÄGG (New wall)
-  = IGENBYGGNAD AV BEFINTLIG VÄGG
-  = HÅLTAGNING/EFTERLAGNING I BEFINTLIG VÄGG
-  = BEFINTLIG DÖRR (Current door)
-  = NY DÖRR (New door)
-  = NY DÖRRÖMFAITNING (New door frame)
-  = BEFINTLIG FÖRVARING (Current storage)
-  = NY FÖRVARING, EJ PLATSBYGGD (New storage, not built-in)
-  = ELEKTRISK HANDDUKSTORK (Electronic towel dryer)
-  = FÖRBEREDS FÖR DISKMASKIN (Prepared for dish washer)
-  = FÖRBEREDS FÖR TVÄTTMASKIN (Prepared for washing machine)
-  = NYTT SCHAKT (New Shaft)

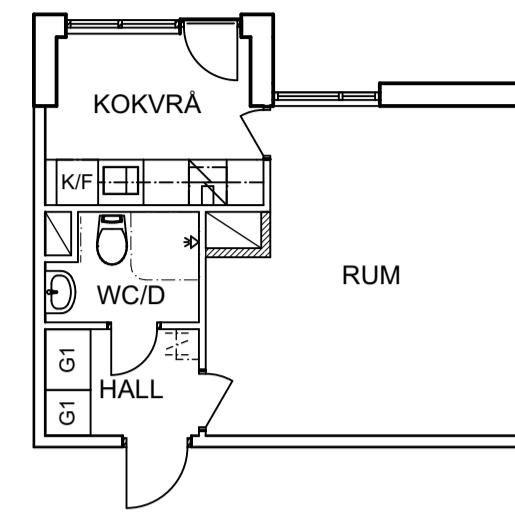
1 ROP TYP B, HÖGER



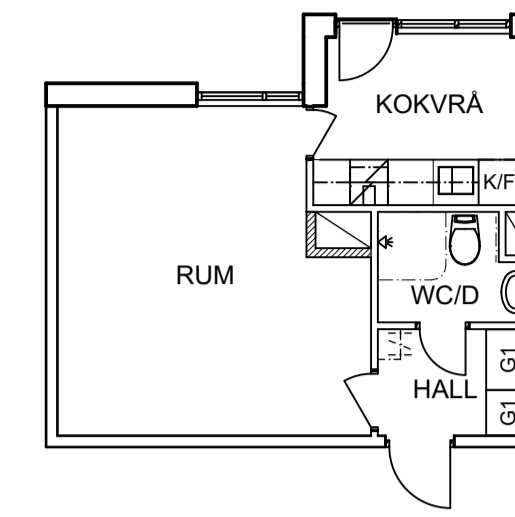
1 ROP TYP B, VÄNSTER



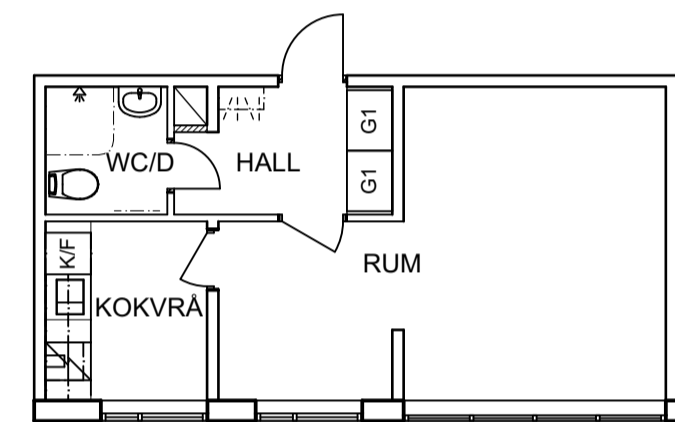
1 ROKV TYP A, HÖGER



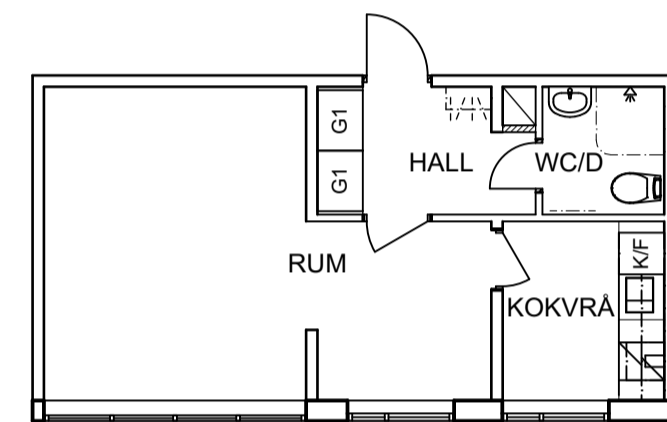
1 ROKV TYP A, VÄNSTER



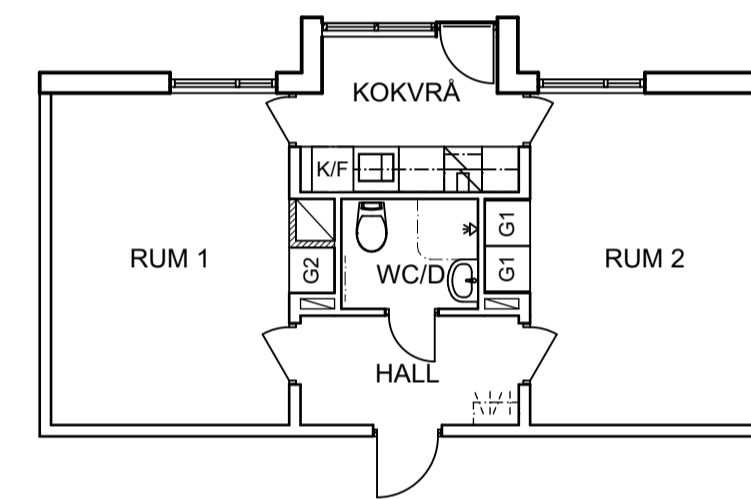
1 ROKV TYP B, HÖGER



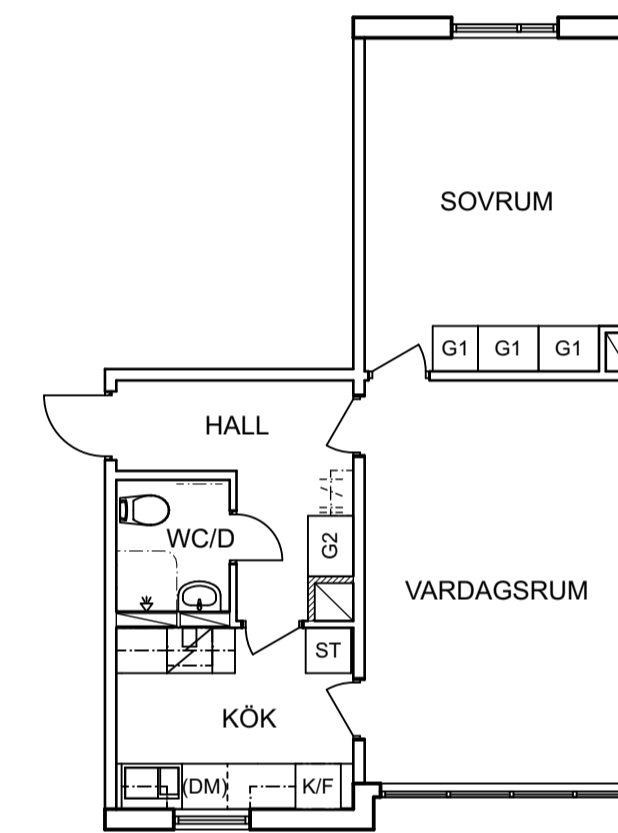
1 ROKV TYP B, VÄNSTER



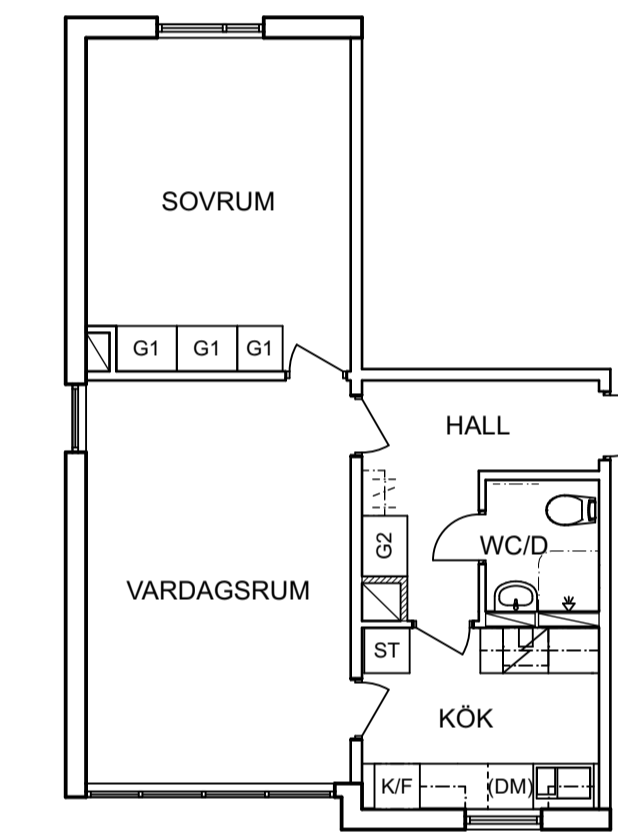
2 ROKV



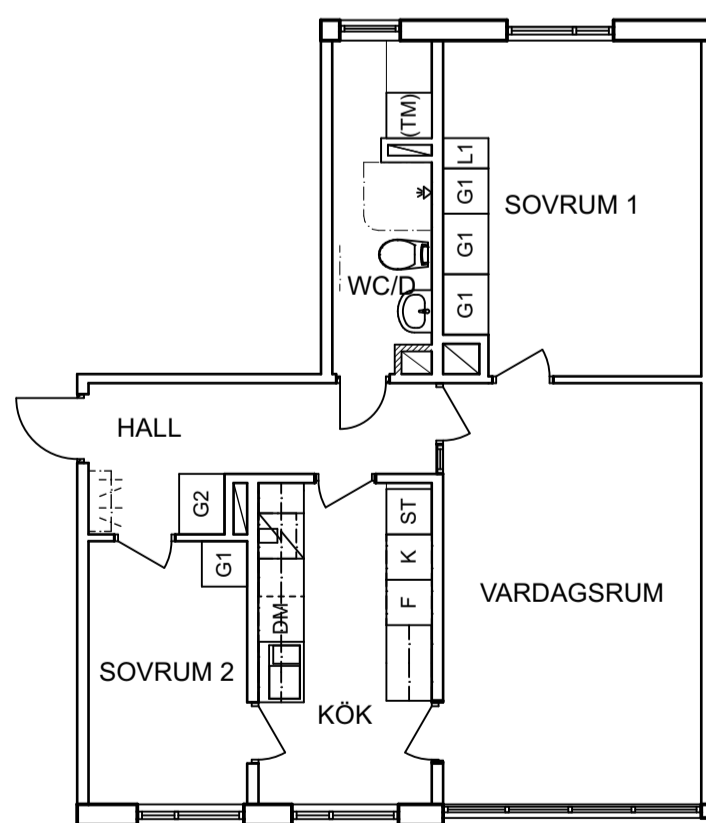
2 ROK, HÖGER



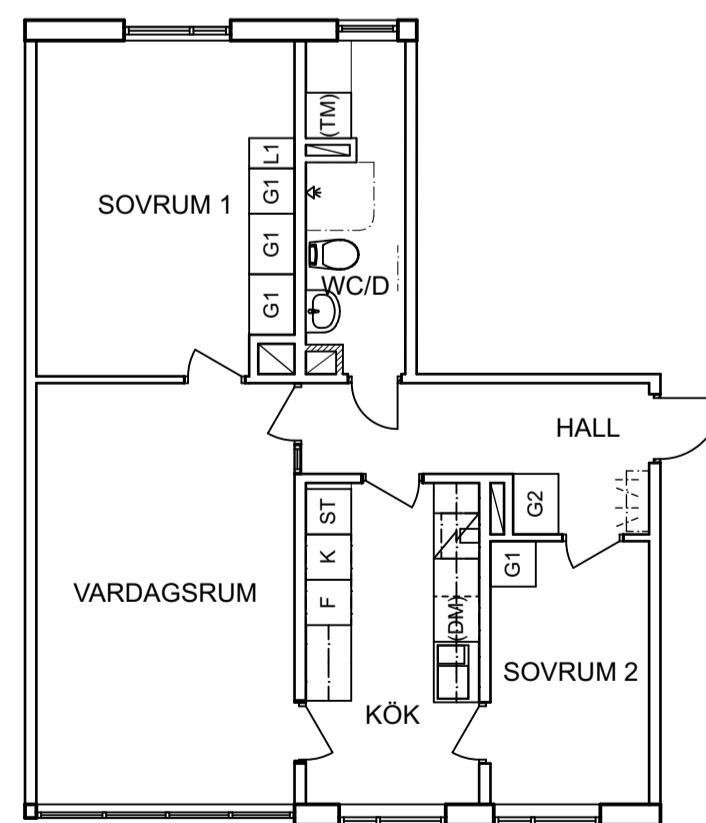
2 ROK, VÄNSTER



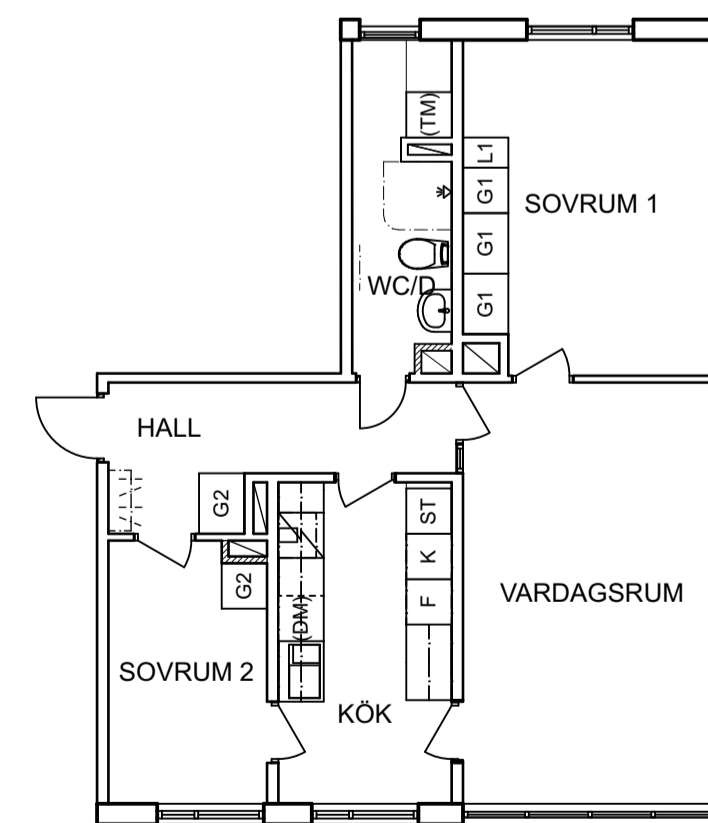
3 ROK TYP A, HÖGER



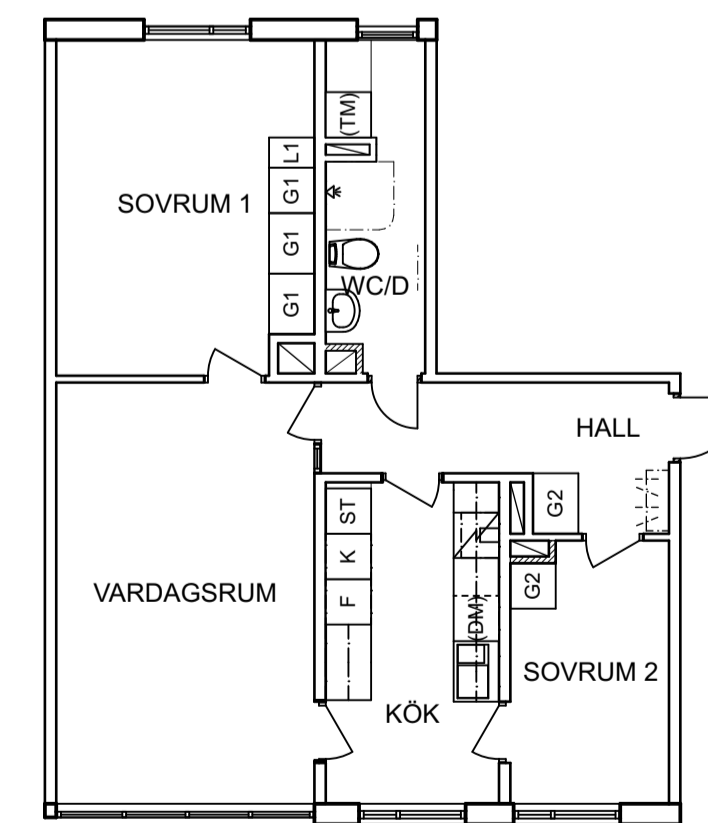
3 ROK TYP A, VÄNSTER



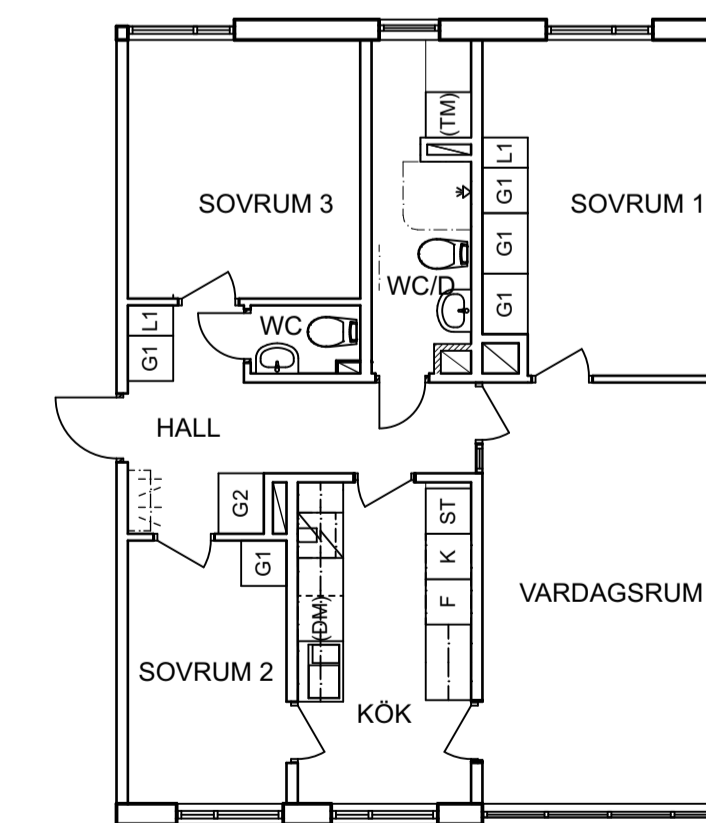
3 ROK TYP A VENT, HÖGER



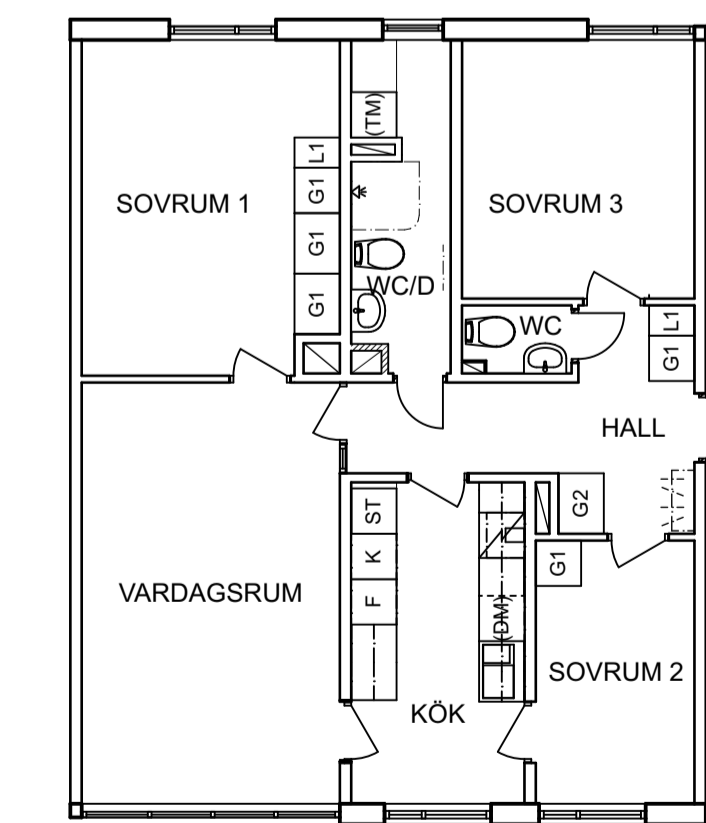
3 ROK TYP A VENT, VÄNSTER



4 ROK TYP A, HÖGER



4 ROK TYP A, VÄNSTER



SKALA 1:100

